

Road Map



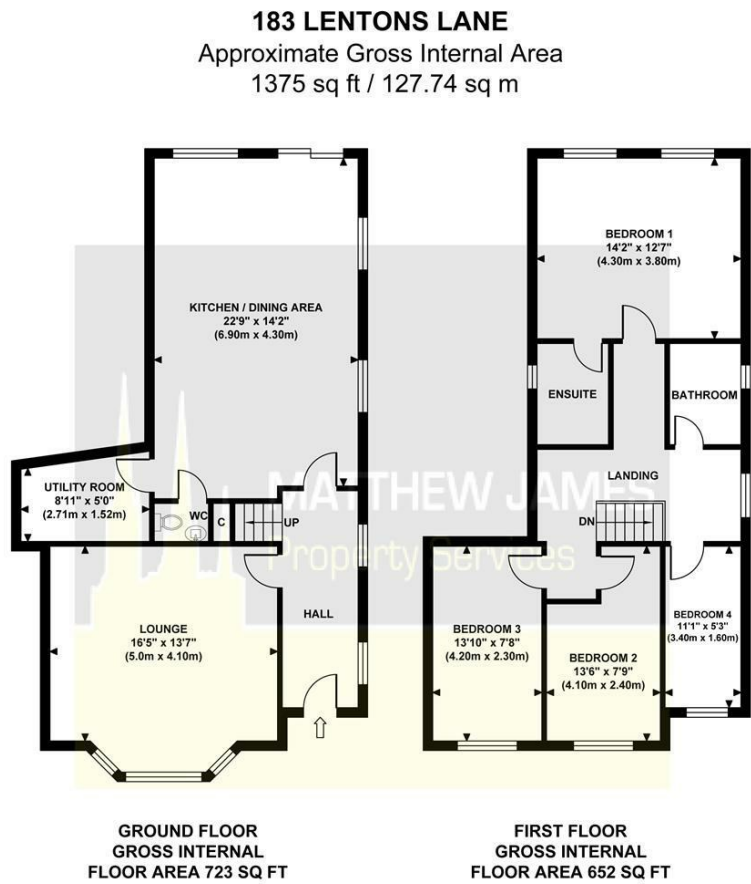
Hybrid Map



Terrain Map



Floor Plan

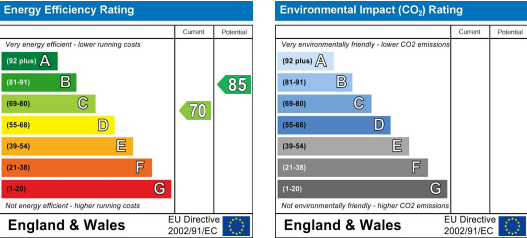


Viewing

Please contact us on 02477 170170 if you wish to arrange a viewing appointment for this property or require further information.

These particulars, whilst believed to be accurate are set out as a general outline only for guidance and do not constitute any part of an offer or contract. Intending purchasers should not rely on them as statements of representation of fact, but must satisfy themselves by inspection or otherwise as to their accuracy. No person in this firms employment has the authority to make or give any representation or warranty in respect of the property.

Energy Efficiency Graph



MATTHEW JAMES
Property Services



183 Lentons Lane

Aldermans Green, Coventry CV2 1NZ

Offers Over £395,000



CONTACT INFORMATION

24a Warwick Row, Coventry CV1 1EY

02477 170170

info@matthewjames.uk.com

www.matthewjames.uk.com

Facebook

Twitter

183 Lentons Lane

Aldermans Green, Coventry CV2 1NZ

Offers Over £395,000



Approach & Driveway

Entrance Hallway

Lounge

16'5 x 13'7

Kitchen / Dining Room

22'9 x 14'2

Utility Room

8'11 x 5'0

Ground Floor W.C

First Floor Landing

Family Bathroom

Bedroom One

14'2 x 12'7

En Suite

Bedroom Two

13'6 x 7'9

Bedroom Three

13'10 x 7'8

Bedroom Four

11'1 x 5'3

Rear Garden

Detached Garage

